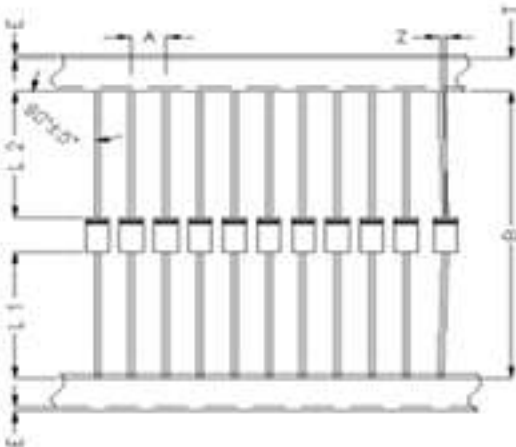


Package Information

Taping Specifications



| Item | Symbol | Specifications(mm) |
|---------------------|--------|--------------------|
| Component Pitch | A | 10.0±0.5 |
| Inner Tape Pitch | B | 52.4±1.5 |
| Component alignment | Z | 1.2 Max |
| Tape width | T | 6.0±0.5 |
| Exposed adhesive | E | 0.8 Max |
| Body eccentricity | L1-L2 | 1.0 Max |